

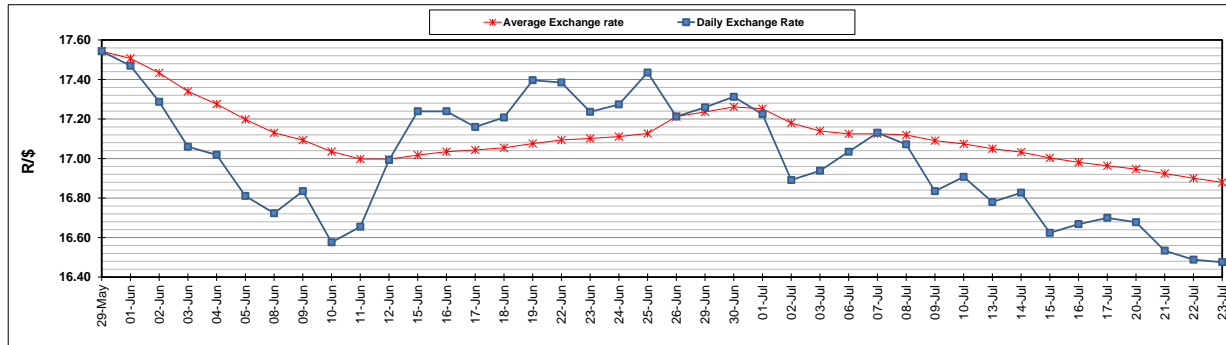
| | PETROL 95 ULP | PETROL 93 ULP & LRP | DIESEL 0.05% | DIESEL 0.005% | ILL. PAR. |
|--|------------------|------------------------|-----------------|------------------|-----------|
| GAUTENG PUMP PRICE (SA c/l) AS FROM 01/07/2020 | 1,512.000 | 1,483.000 | - | - | - |
| WHOLESALE PRICE (SA c/l) AS FROM 01/07/2020 | - | - | 1,303.560 | 1,307.960 | 703.828 |
| SINGLE NATIONAL MAXIMUM RETAIL PRICE | - | - | - | - | 882.000 |
| BASIC FUEL PRICE - 23/07/2020 (SA c/l) | 550.373 | 538.314 | 580.154 | 584.888 | 518.505 |
| PRESS RELEASE CONTRIBUTION TO BFP 01/07/2020 - 23/07/2020 (SA c/l) | 564.770 | 545.770 | 552.630 | 557.030 | 499.128 |
| UNIT OVER/(UNDER) RECOVERY - 23/07/2020 (SA c/l) | 14.397 | 7.456 | (27.524) | (27.858) | (19.377) |
| AVERAGE BASIC FUEL PRICE 26/06/2020 - 23/07/2020 | 553.705 | 539.709 | 579.545 | 584.011 | 514.112 |
| AVERAGE UNIT OVER/(UNDER) RECOVERY 26/06/2020 - 23/07/2020 | (14.735) | (18.389) | (52.865) | (52.331) | (47.084) |

ANALYSIS MOVEMENT OF AVERAGE OVER/(UNDER) RECOVERY

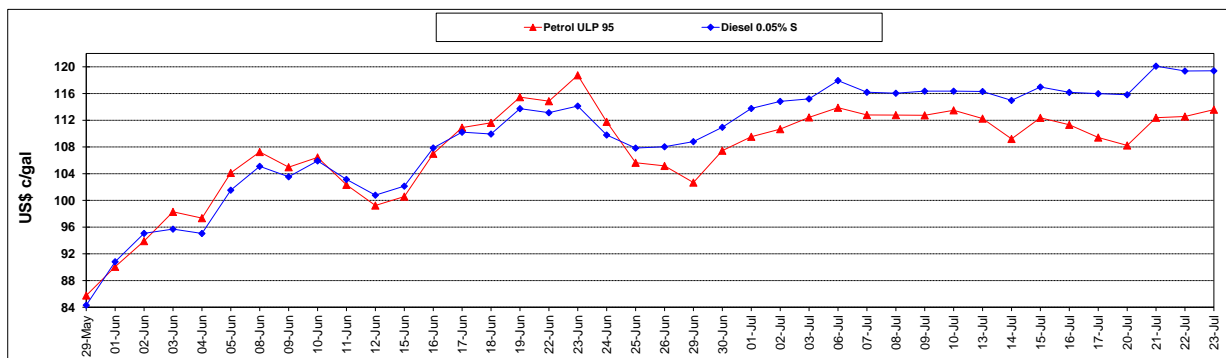
| | PETROL 95 | PETROL 93 | DIESEL 0.05% | DIESEL 0.005% | ILL. PAR. |
|--|-----------|-----------|--------------|---------------|-----------|
| - MOVEMENT IN INTERNATIONAL PRODUCT PRICES | (22.857) | (26.306) | (61.366) | (60.898) | (54.625) |
| - MOVEMENT IN EXCHANGE RATE | 8.122 | 7.917 | 8.501 | 8.567 | 7.541 |
| AVERAGE UNIT OVER/(UNDER) RECOVERY 26/06/2020 - 23/07/2020 | (14.735) | (18.389) | (52.865) | (52.331) | (47.084) |

R/\$ EXCHANGE RATE - (R/\$16.4753 - 23/07/2020)

EXCHANGE RATE USED IN BASIC FUEL PRICE



INTERNATIONAL PRODUCT PRICES OF BASKET USED IN BASIC FUEL PRICE



BASIC FUEL PRICE IN SA CENTS PER LITRE

